

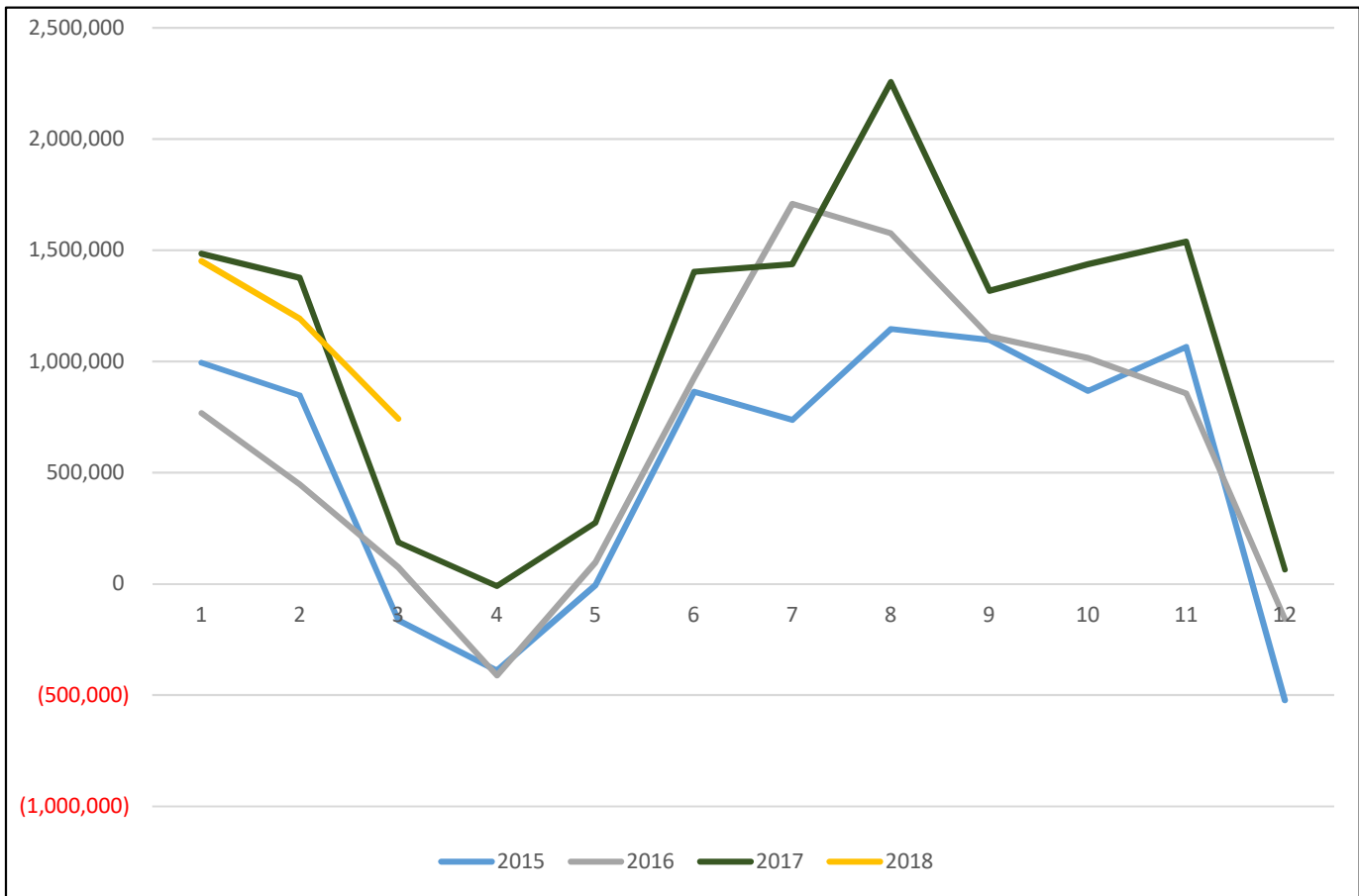


MONTHLY FINANCIAL REPORT JULY-SEPTEMBER 2017

HOLMES COUNTY SCHOOL BOARD
701 E. PENNSYLVANIA AVE.
BONIFAY, FL 32425

Holmes County School Board

General Fund - Revenues Over (Under) Expenditures



	2012	2013	2014	2015	2016	2017	2018
July	843,827	879,439	362,540	994,151	768,092	1,483,783	1,451,538
August	336,798	642,096	123,262	848,010	447,273	1,376,026	1,192,769
September	(100,100)	373,907	(408,733)	(163,774)	74,296	186,830	742,275
October	442,623	(402,407)	(642,898)	(390,046)	(411,751)	(9,929)	
November	23,559	113,993	(398,203)	(6,077)	97,114	274,734	
December	820,880	813,639	296,970	863,610	926,164	1,402,641	
January	665,589	673,989	258,611	736,648	1,708,574	1,436,947	
February	782,886	631,176	(62,567)	1,145,885	1,575,991	2,256,298	
March	603,552	566,101	(147,541)	1,096,470	1,112,355	1,317,074	
April	721,017	533,576	(245,750)	867,377	1,016,235	1,438,017	
May	600,996	492,736	(370,472)	1,065,323	856,906	1,537,879	
June	(534,689)	(891,644)	(2,227,616)	(523,328)	(157,450)	64,956	

DISTRICT SCHOOL BOARD OF HOLMES COUNTY
SCHEDULE OF REVENUES, EXPENDITURES AND CHANGES IN FUND BALANCES
BUDGET AND ACTUAL - GENERAL FUND
July 1, 2017 -September 30, 2017

		General		
		Budget	Actual	Variance
Revenues:				
Federal 100, 200	3100	165,000	69,199	(95,801)
State Sources	3300	21,272,214	5,282,868	(15,989,346)
Local - 400	3411	2,902,564	30,222	(2,872,342)
Total Revenues		24,339,778	5,382,288	(18,957,490)
Other Financing Sources (Uses):				
Transfers In	3600	358,299	0	(358,299)
Transfers Out	9700		0	0
Total Revenue & Other Financing Sources (Uses)		24,698,077	5,382,288	(19,315,789)
Expenditures:				
Instruction	5000	14,555,626	2,523,559	12,032,066
Pupil Personnel Services	6100	628,202	110,774	517,428
Instructional Media Services	6200	527,371	109,791	417,580
Instruction and Curriculum	6300	541,211	103,398	437,812
Instructional Staff Training	6400	244,482	33,125	211,356
Instruction Related Technology	6500	260,095	43,687	216,408
Board of Education	7100	236,289	65,880	170,409
General Administration	7200	182,191	54,620	127,571
School Administration	7300	1,717,168	475,850	1,241,319
Facilities	7400	0	0	0
Fiscal Services	7500	300,388	70,841	229,547
Food Service	7600	6,000	0	6,000
Central Services	7700	552,973	126,489	426,484
Pupil Transportation Services	7800	1,395,571	163,497	1,232,075
Operation of Plant	7900	2,617,130	538,069	2,079,061
Maintenance of Plant	8100	931,081	219,147	711,934
Administrative Technology	8200	2,300	1,285	1,015
Debt Service	9200	0	0	0
Total Expenses		24,698,077	4,640,013	20,058,064
Excess of Revenues Over (Under) Expenditures		(358,299)	742,275	1,100,574
Net Change in Fund Balances		0	742,275	742,275
Fund Balance, July 1, 2017	2800	962,282	962,282	0
Total Current Fund Balance	2750	962,282	1,704,558	742,275

DISTRICT SCHOOL BOARD OF HOLMES COUNTY
SCHEDULE OF REVENUES, EXPENDITURES AND CHANGES IN FUND BALANCES
BUDGET AND ACTUAL - FEDERAL
July 1, 2017 -September 30, 2017

		Federal		
		Budget	Actual	Variance
Revenues:				
Federal 100, 200	3100	2,533,163	0	(2,533,163)
State Sources	3300	0	0	0
Local - 400	3411	0	0	0
Total Revenues		2,533,163	0	(2,533,163)
Other Financing Sources (Uses):				
Transfers In	3600	0	0	0
Transfers Out	9700	0	0	0
Total Revenue & Other Financing Sources (Uses)		2,533,163	0	(2,533,163)
Expenditures:				
Instruction	5000	1,898,874	318,351	1,580,523
Pupil Personnel Services	6100	165,562	36,951	128,611
Instructional Media Services	6200	0	0	0
Instruction and Curriculum	6300	175,186	32,363	142,824
Instructional Staff Training	6400	154,729	44,615	110,114
Instruction Related Technology	6500	0	0	0
Board of Education	7100	0	0	0
General Administration	7200	128,959	0	128,959
School Administration	7300	0	0	0
Facilities	7400	0	0	0
Fiscal Services	7500	0	0	0
Food Service	7600	0	0	0
Central Services	7700	0	0	0
Pupil Transportation Services	7800	9,853	10,462	(609)
Operation of Plant	7900	0	0	0
Maintenance of Plant	8100	0	0	0
Administrative Technology	8200	0	0	0
Debt Service	9100	0	0	0
Total Expenses		2,533,163	442,741	2,090,422
Excess of Revenues Over (Under) Expenditures		0	(442,741)	(442,741)
Net Change in Fund Balances		0	(442,741)	(442,741)
Fund Balance, July 1, 2017	2800	0	0	0
Total Current Fund Balance	2750	0	(442,741)	(442,741)

DISTRICT SCHOOL BOARD OF HOLMES COUNTY
SCHEDULE OF REVENUES, EXPENDITURES AND CHANGES IN FUND BALANCES
BUDGET AND ACTUAL - FOOD SERVICE
July 1, 2017 -September 30, 2017

		Food Service		
		Budget	Actual	Variance
Revenues:				
Federal 100, 200	3100	1,950,000	137,139	(1,812,861)
State Sources	3300	24,000	0	(24,000)
Local - 400	3411	43,100	6,591	(36,509)
Total Revenues		2,017,100	143,730	(1,873,371)
Other Financing Sources (Uses):				
Transfers In	3600	0	0	0
Transfers Out	9700	(100,000)	0	100,000
Total Revenue & Other Financing Sources (Uses)		1,917,100	143,730	(1,773,371)
Expenditures:				
Instruction	5000	0	0	0
Pupil Personnel Services	6100	0	0	0
Instructional Media Services	6200	0	0	0
Instruction and Curriculum	6300	0	0	0
Instructional Staff Training	6400	0	0	0
Instruction Related Technology	6500	0	0	0
Board of Education	7100	0	0	0
General Administration	7200	0	0	0
School Administration	7300	0	0	0
Facilities	7400	0	0	0
Fiscal Services	7500	0	0	0
Food Service	7600	1,905,000	234,631	1,670,369
Central Services	7700	0	0	0
Pupil Transportation Services	7800	0	0	0
Operation of Plant	7900	0	0	0
Maintenance of Plant	8100	0	0	0
Administrative Technology	8200	0	0	0
Debt Service	9100	0	0	0
Total Expenses		1,905,000	234,631	1,670,369
Excess of Revenues Over (Under) Expenditures		112,100	(90,902)	(203,002)
Net Change in Fund Balances		12,100	(90,902)	(103,002)
Fund Balance, July 1, 2017	2800	74,154	74,154	0
Total Current Fund Balance	2750	86,254	(16,748)	(103,002)

DISTRICT SCHOOL BOARD OF HOLMES COUNTY
SCHEDULE OF REVENUES, EXPENDITURES AND CHANGES IN FUND BALANCES
BUDGET AND ACTUAL - CAPITAL PROJECTS
July 1, 2017 -September 30, 2017

		Capital Projects		
		Budget	Actual	Variance
Revenues:				
Federal 100, 200	3100	0	0	0
State Sources	3300	107,834	1,027	(106,807)
Local - 400	3411	776,334	2,226	(774,108)
Total Revenues		884,168	3,253	(880,915)
Other Financing Sources (Uses):				
Transfers In	3600	0	0	0
Transfers Out	9700	0	0	0
Total Revenue & Other Financing Sources (Uses)		884,168	3,253	(880,915)
Expenditures:				
Instruction	5000	0	0	0
Pupil Personnel Services	6100	0	0	0
Instructional Media Services	6200	0	0	0
Instruction and Curriculum	6300	0	0	0
Instructional Staff Training	6400	0	0	0
Instruction Related Technology	6500	0	0	0
Board of Education	7100	0	0	0
General Administration	7200	0	0	0
School Administration	7300	0	0	0
Facilities	7400	2,598,806	784,302	1,814,504
Fiscal Services	7500	0	0	0
Food Service	7600	0	0	0
Central Services	7700	0	0	0
Pupil Transportation Services	7800	0	0	0
Operation of Plant	7900	0	0	0
Maintenance of Plant	8100	0	0	0
Administrative Technology	8200	0	0	0
Debt Service	9100	0	0	0
Total Expenses		2,598,806	784,302	1,814,504
Excess of Revenues Over (Under) Expenditures		(1,714,638)	(781,049)	933,589
Net Change in Fund Balances		(2,004,693)	(781,049)	1,223,644
Fund Balance, July 1, 2017	2800	2,315,582	2,315,582	0
Total Current Fund Balance	2750	310,889	1,534,533	1,223,644

DISTRICT SCHOOL BOARD OF HOLMES COUNTY
SCHEDULE OF REVENUES, EXPENDITURES AND CHANGES IN FUND BALANCES
BUDGET AND ACTUAL - DEBT SERVICE
July 1, 2017 -September 30, 2017

		Debt Service		
		Budget	Actual	Variance
Revenues:				
Federal 100, 200	3100	0	0	0
State Sources	3300	294,000	0	(294,000)
Local - 400	3411	250	0	(250)
Total Revenues		294,250	0	(294,250)
Other Financing Sources (Uses):				
Transfers In	3600	31,756	0	(31,756)
Transfers Out	9700	0	0	0
Total Revenue & Other Financing Sources (Uses)		326,006	0	(326,006)
Expenditures:				
Instruction	5000	0	0	0
Pupil Personnel Services	6100	0	0	0
Instructional Media Services	6200	0	0	0
Instruction and Curriculum	6300	0	0	0
Instructional Staff Training	6400	0	0	0
Instruction Related Technology	6500	0	0	0
Board of Education	7100	0	0	0
General Administration	7200	0	0	0
School Administration	7300	0	0	0
Facilities	7400	0	0	0
Fiscal Services	7500	0	0	0
Food Service	7600	0	0	0
Central Services	7700	0	0	0
Pupil Transportation Services	7800	0	0	0
Operation of Plant	7900	0	0	0
Maintenance of Plant	8100	0	0	0
Administrative Technology	8200	0	0	0
Debt Service	9100	325,756	241,006	84,750
Total Expenses		325,756	241,006	84,750
Excess of Revenues Over (Under) Expenditures		(31,506)	(241,006)	(209,500)
Net Change in Fund Balances		250	(241,006)	(241,256)
Fund Balance, July 1, 2017	2800	9,194	9,194	0
Total Current Fund Balance	2750	9,444	(231,812)	(241,256)

DISTRICT SCHOOL BOARD OF HOLMES COUNTY
SCHEDULE OF REVENUES, EXPENDITURES AND CHANGES IN FUND BALANCES
BUDGET AND ACTUAL - INTERNAL SERVICE
July 1, 2017 -September 30, 2017

		Internal Service		
		Budget	Actual	Variance
Revenues:				
Federal 100, 200	3100	0	0	0
State Sources	3300	0	0	0
Local - 400	3411	2,500	356	(2,144)
Total Revenues		2,500	356	(2,144)
Other Financing Sources (Uses):				
Transfers In	3600	0	0	0
Transfers Out	9700	0	0	0
(Uses)		0	0	0
Expenditures:				
Instruction	5000	0	0	0
Pupil Personnel Services	6100	0	0	0
Instructional Media Services	6200	0	0	0
Instruction and Curriculum	6300	0	0	0
Instructional Staff Training	6400	0	0	0
Instruction Related Technology	6500	0	0	0
Board of Education	7100	0	0	0
General Administration	7200	0	0	0
School Administration	7300	0	0	0
Facilities	7400	0	0	0
Fiscal Services	7500	0	50	(50)
Food Service	7600	0	0	0
Central Services	7700	0	0	0
Pupil Transportation Services	7800	0	0	0
Operation of Plant	7900	0	0	0
Maintenance of Plant	8100	0	0	0
Administrative Technology	8200	0	0	0
Debt Service	9100	0	0	0
Total Expenses		0	50	(50)
Excess of Revenues Over (Under) Expenditures		2,500	306	(2,194)
Net Change in Fund Balances		2,500	306	(2,194)
Fund Balance, July 1, 2017	2800	1,789,199	1,789,199	0
Total Current Fund Balance	2750	1,791,699	1,789,504	(2,194)

DISTRICT SCHOOL BOARD OF HOLMES COUNTY
TOTAL REVENUE BUDGETED/RECEIVED
July 1, 2017 -September 30, 2017

Fund	Revenue	Collected
110 191 : R.O.T.C		9,122.19
110 202 : MEDICAID-BEHAVIORAL SERVICES		11.72
110 203 : MEDICAID-THERAPY SERVICES		1,207.67
110 204 : MEDICAID-ADMINISTRATIVE CLAIM		58,857.00
110 310 : FLORIDA EDUCATION FINANCE PROG		4503462
110 343 : STATE LICENSE TAX		772.82
110 355 : CLASS SIZE REDUCT - OPERATING		764,115.00
110 371 : VOLUNTARY PREKINDERGARTEN PROG		14,415.78
110 390 : READING INITIATIVES		102.00
110 411 : DISTRICT SCHOOL TAXES		3,678.85
110 431 : INTEREST ON INVESTMENTS		659.54
110 471 : PRE SCHOOL PROGRAM FEES		4,784.00
110 490 : MISCELLANEOUS LOCAL SOURCES		19,961.61
110 492 : TRANS. FOR SCHOOL ACTIVITIES		608.50
110 495 : OTHER LOCAL REVENUE		529.56
	110 Total	<u><u>5,382,288.24</u></u>

Fund	Revenue	Collected
210 341 : RACING COMMISSION FUNDS		0.00
210 431 : INTEREST ON INVESTMENTS		0.23
	210 Total	<u><u>0.23</u></u>

Fund	Revenue	Collected
340 391 : PUBLIC EDUC. CAPITAL OUTLAY		0.00
340 431 : INTEREST ON INVESTMENTS		854.44
	340 Total	<u><u>854.44</u></u>

Fund	Revenue	Collected
360 321 : CO&DS DISTRIBUTED TO DISTRICTS		857.89
360 325 : INTEREST - UNDISTRIBUTED CO&DS		169.27
360 431 : INTEREST ON INVESTMENTS		27.26
	360 Total	<u><u>1,054.42</u></u>

Fund	Revenue	Collected
370 413 : DISTRICT LOCAL CAPITAL TAX		969.99
370 431 : INTEREST ON INVESTMENTS		302.87
	370 Total	<u><u>1,272.86</u></u>

Fund	Revenue	Collected
390 431 : INTEREST ON INVESTMENTS		71.36

DISTRICT SCHOOL BOARD OF HOLMES COUNTY
TOTAL REVENUE BUDGETED/RECEIVED
July 1, 2017 -September 30, 2017

390 Total 71.36

Fund	Revenue	Collected
410 201	: VOCATIONAL EDUCATION ACTS	0.00
410 226	: EISENHOWER MATH/SCI - TITLE II	0.00
410 230	: INDIV.WITH DISABIL. ED ACT	0.00
410 240	: ELE AND SEC ED ACT - TITLE 1	0.00
410 242	: 21st Century Schools - Title IV Wings	0.00
410 290	: OTHER FEDERAL THROUGH STATE	0.00
	410 Total	<u><u>0.00</u></u>

Fund	Revenue	Collected
710 260	: NATIONAL SCHOOL LUNCH ACT	0.00
710 261	: SCHOOL LUNCH REIMBURSEMENT	101,090.01
710 262	: SCHOOL BREAKFAST REIMBURSEMENT	34,658.46
710 263	: SCHOOL SNACK REIMBURSEMENT	1,390.40
710 265	: U.S.D.A DONATED COMMODITIES	0.00
710 337	: SCHOOL BREAKFAST SUPPLEMENT	0.00
710 338	: SCHOOL LUNCH SUPPLEMENT	0.00
710 431	: INTEREST ON INVESTMENTS	0.00
710 451	: STUDENT LUNCHES	1,550.06
710 453	: ADULT BREAKFASTS/LUNCHES	4,950.97
710 454	: STUDENT/ADULT A LA CARTE	89.60
710 490	: MISCELLANEOUS LOCAL SOURCES	0.00
	710 Total	<u><u>143,729.50</u></u>

Fund	Revenue	Collected
810 431	: INTEREST ON INVESTMENTS	355.54
810 490	: MISCELLANEOUS LOCAL SOURCES	0.00
	810 Total	<u><u>355.54</u></u>

Total Revenue to Date **5,529,626.59**

DISTRICT SCHOOL BOARD OF HOLMES COUNTY
TOTAL EXPENSES BY FUNCTION AND OBJECT
July 1, 2017 -September 30, 2017

110 GENERAL OPERATING

Function	Object	Expended YTD
5100 : BASIC	120 : CLASSROOM TEACHERS	1,207,893.46
	125 : INST/SICK LEAVE BUY BACK	7,844.11
	128 : RETIREMENT BONUS	20,084.70
	150 : AIDES	50,768.58
	160 : OTHER SUPPORT PERSONNEL	6,672.52
	210 : RETIREMENT	101,968.98
	220 : SOCIAL SECURITY	76,463.59
	221 : MEDICARE	17,882.70
	230 : GROUP INSURANCE	150,088.95
	300 : PURCHASED SERVICES	4,122.20
	310 : PROFESSIONAL SERVICES	26,813.60
	350 : REPAIRS AND MAINTENANCE	1,377.31
	360 : RENTALS	5,932.89
	369 : TECH & SOFTWARE RENTALS, LICENSES & SUBSCRIPTIONS	21,350.10
	390 : OTHER PURCHASED SERVICE	307.00
	510 : SUPPLIES	81,295.14
	520 : TEXTBOOKS	5,861.57
	521 : STATE TEXTBOOKS	139,670.03
	622 : NON CAPITALIZED A V MATERIALS	1,754.00
	642 : FURN, FIXT. & EQUIP NON-CAPI.	199.99
	649 : TECH RELATED FURN, FIXT, & EQUIP- NONCAPITALIZED	3,346.00
	730 : DUES AND FEES	1,202.00
	750 : SUBSTITUTES	15,122.67
5100 : BASIC Total		1,948,022.09
5200 : EXCEPTIONAL EDUC	110 : ADMINSTRATORS - REGULAR PAY	6,171.16
	120 : CLASSROOM TEACHERS	209,327.46
	130 : OTHER CERTIFIED INSTRUCTIONAL	45,327.80
	150 : AIDES	7,876.71
	210 : RETIREMENT	22,194.04
	220 : SOCIAL SECURITY	16,363.37
	221 : MEDICARE	3,826.90
	230 : GROUP INSURANCE	30,987.59
	310 : PROFESSIONAL SERVICES	4,630.00
	390 : OTHER PURCHASED SERVICE	2,184.00
	750 : SUBSTITUTES	1,562.98
5200 : EXCEPTIONAL EDUC Total		350,452.01
5300 : VOCATIONAL	120 : CLASSROOM TEACHERS	78,584.24
	125 : INST/SICK LEAVE BUY BACK	10,810.18
	130 : OTHER CERTIFIED INSTRUCTIONAL	5,974.92
	210 : RETIREMENT	6,697.02
	220 : SOCIAL SECURITY	5,171.15
	221 : MEDICARE	1,209.43
	230 : GROUP INSURANCE	10,038.11
	330 : TRAVEL	2,430.61
	369 : TECH & SOFTWARE RENTALS, LICENSES & SUBSCRIPTIONS	370.39

DISTRICT SCHOOL BOARD OF HOLMES COUNTY
TOTAL EXPENSES BY FUNCTION AND OBJECT
July 1, 2017 -September 30, 2017

	521 : STATE TEXTBOOKS	1,524.65
	730 : DUES AND FEES	1,250.00
	750 : SUBSTITUTES	1,189.50
5300 : VOCATIONAL Total		125,250.20
5500 : PREKINDERGARTEN	120 : CLASSROOM TEACHERS	3,770.09
	150 : AIDES	25,488.51
	210 : RETIREMENT	2,195.76
	220 : SOCIAL SECURITY	1,776.47
	221 : MEDICARE	415.47
	230 : GROUP INSURANCE	6,163.88
	510 : SUPPLIES	981.93
	730 : DUES AND FEES	10.00
	750 : SUBSTITUTES	376.65
5500 : PREKINDERGARTEN Total		41,178.76
5900 : OTHER INSTRUCTION	120 : CLASSROOM TEACHERS	11,444.26
	123 : CLASSROOM TEACHER-SUPPLEMENTS	31,462.62
	133 : OTHER CERTIFIED-SUPPLIMENTS	1,269.24
	153 : TEACHER AIDES - SUPPLEMENTS	2,809.83
	163 : OTHER SUPPPORT-SUPPLEMENTS	281.99
	210 : RETIREMENT	3,741.34
	220 : SOCIAL SECURITY	3,089.00
	221 : MEDICARE	722.33
	750 : SUBSTITUTES	3,835.61
5900 : OTHER INSTRUCTION Total		58,656.22
6100 : PUPIL PERSONNEL SERVICES	150 : AIDES	508.87
	160 : OTHER SUPPORT PERSONNEL	3,288.84
	210 : RETIREMENT	300.78
	220 : SOCIAL SECURITY	228.53
	221 : MEDICARE	53.44
	230 : GROUP INSURANCE	793.28
6100 : PUPIL PERSONNEL SERVICES Total		5,173.74
6120 : GUIDANCE	120 : CLASSROOM TEACHERS	529.95
	130 : OTHER CERTIFIED INSTRUCTIONAL	72,791.73
	210 : RETIREMENT	5,799.14
	220 : SOCIAL SECURITY	4,281.42
	221 : MEDICARE	1,001.28
	230 : GROUP INSURANCE	6,744.00
6120 : GUIDANCE Total		91,147.52
6140 : PSYCHOLOGICAL	310 : PROFESSIONAL SERVICES	489.00
6140 : PSYCHOLOGICAL Total		489.00
6150 : PARENT INVOLVEMENT	369 : TECH & SOFTWARE RENTALS, LICENSES & SUBSCRIPTIONS	13,963.50
6150 : PARENT INVOLVEMENT Total		13,963.50
6200 : INSTRUCTIONAL MEDIA	130 : OTHER CERTIFIED INSTRUCTIONAL	64,326.83
	150 : AIDES	3,788.16

DISTRICT SCHOOL BOARD OF HOLMES COUNTY
TOTAL EXPENSES BY FUNCTION AND OBJECT
July 1, 2017 -September 30, 2017

	160 : OTHER SUPPORT PERSONNEL	1,388.40
	210 : RETIREMENT	5,504.68
	220 : SOCIAL SECURITY	4,079.21
	221 : MEDICARE	953.97
	230 : GROUP INSURANCE	6,777.14
	350 : REPAIRS AND MAINTENANCE	3,387.35
	360 : RENTALS	6,253.11
	369 : TECH & SOFTWARE RENTALS, LICENSES & SUBSCRIPTIONS	11,810.00
	510 : SUPPLIES	13.57
	530 : PERIODICALS	63.00
	610 : LIBRARY BOOKS	1,291.00
	642 : FURN, FIXT. & EQUIP NON-CAPI.	90.73
	750 : SUBSTITUTES	63.75
6200 : INSTRUCTIONAL MEDIA Total		109,790.90
6300 : INSTRUCTION & CURR. DEVELOP	110 : ADMINSTRATORS - REGULAR PAY	16,562.52
	130 : OTHER CERTIFIED INSTRUCTIONAL	62,993.07
	150 : AIDES	354.00
	160 : OTHER SUPPORT PERSONNEL	3,273.52
	210 : RETIREMENT	6,588.14
	220 : SOCIAL SECURITY	5,003.03
	221 : MEDICARE	1,170.08
	230 : GROUP INSURANCE	7,454.12
6300 : INSTRUCTION & CURR. DEVELOP Total		103,398.48
6400 : INST. STAFF TRAINING	110 : ADMINSTRATORS - REGULAR PAY	18,582.00
	120 : CLASSROOM TEACHERS	1,400.00
	130 : OTHER CERTIFIED INSTRUCTIONAL	325.08
	210 : RETIREMENT	4,437.70
	220 : SOCIAL SECURITY	1,271.07
	221 : MEDICARE	297.27
	230 : GROUP INSURANCE	1,264.50
	310 : PROFESSIONAL SERVICES	2,800.00
	330 : TRAVEL	1,968.85
	510 : SUPPLIES	278.98
	730 : DUES AND FEES	500.00
6400 : INST. STAFF TRAINING Total		33,125.45
6500 : INSTRUCTION RELATED TECHNOLOGY	110 : ADMINSTRATORS - REGULAR PAY	12,528.29
	160 : OTHER SUPPORT PERSONNEL	21,807.68
	210 : RETIREMENT	2,719.39
	220 : SOCIAL SECURITY	2,099.56
	221 : MEDICARE	491.00
	230 : GROUP INSURANCE	4,040.98
6500 : INSTRUCTION RELATED TECHNOLOGY Total		43,686.90
7100 : SCHOOL BOARD	170 : BOARD MEMBERS	32,667.50
	210 : RETIREMENT	9,759.74
	220 : SOCIAL SECURITY	2,025.40
	221 : MEDICARE	473.60
	230 : GROUP INSURANCE	5,801.22

DISTRICT SCHOOL BOARD OF HOLMES COUNTY
TOTAL EXPENSES BY FUNCTION AND OBJECT
July 1, 2017 -September 30, 2017

	330 : TRAVEL	1,077.87
	510 : SUPPLIES	125.74
	730 : DUES AND FEES	13,949.00
7100 : SCHOOL BOARD Total		65,880.07
7200 : GENERAL ADMINISTRATION	110 : ADMINSTRATORS - REGULAR PAY	24,684.42
	160 : OTHER SUPPORT PERSONNEL	7,418.28
	210 : RETIREMENT	9,696.08
	220 : SOCIAL SECURITY	1,990.38
	221 : MEDICARE	465.52
	230 : GROUP INSURANCE	2,398.68
	330 : TRAVEL	318.07
	350 : REPAIRS AND MAINTENANCE	229.01
	360 : RENTALS	342.00
	510 : SUPPLIES	275.25
	730 : DUES AND FEES	6,802.00
7200 : GENERAL ADMINISTRATION Total		54,619.69
7300 : SCHOOL ADMINISTRATION	110 : ADMINSTRATORS - REGULAR PAY	190,413.30
	114 : ADMINISTRATIVE - TERMINAL PAY	9,506.69
	115 : ADMIN SICK LEAVE BUY BACK	80,035.68
	120 : CLASSROOM TEACHERS	582.20
	150 : AIDES	7,684.06
	160 : OTHER SUPPORT PERSONNEL	68,771.38
	165 : NON INST SICK LEAVE BUY BACK	30,243.47
	210 : RETIREMENT	39,075.27
	220 : SOCIAL SECURITY	16,333.76
	221 : MEDICARE	3,819.93
	230 : GROUP INSURANCE	28,870.20
	379 : TELEPHONE & DATA COMMUNICATIONS	40.01
	750 : SUBSTITUTES	189.00
	790 : MISC EXPENSES	285.00
7300 : SCHOOL ADMINISTRATION Total		475,849.95
7500 : FISCAL SERVICES	110 : ADMINSTRATORS - REGULAR PAY	18,175.02
	160 : OTHER SUPPORT PERSONNEL	33,340.78
	210 : RETIREMENT	6,768.12
	220 : SOCIAL SECURITY	3,014.81
	221 : MEDICARE	705.08
	230 : GROUP INSURANCE	6,030.72
	350 : REPAIRS AND MAINTENANCE	45.00
	360 : RENTALS	45.00
	372 : POSTAGE	2,076.42
	390 : OTHER PURCHASED SERVICE	616.00
	510 : SUPPLIES	24.27
7500 : FISCAL SERVICES Total		70,841.22
7700 : CENTRAL SERVICES	110 : ADMINSTRATORS - REGULAR PAY	43,415.34
	160 : OTHER SUPPORT PERSONNEL	30,581.56
	210 : RETIREMENT	7,885.78
	220 : SOCIAL SECURITY	4,469.81

DISTRICT SCHOOL BOARD OF HOLMES COUNTY
TOTAL EXPENSES BY FUNCTION AND OBJECT
July 1, 2017 -September 30, 2017

	221 : MEDICARE	1,045.46
	230 : GROUP INSURANCE	7,916.44
	310 : PROFESSIONAL SERVICES	6,289.78
	311 : PROF SVCS: UP TO 25,000	12.00
	350 : REPAIRS AND MAINTENANCE	106.29
	372 : POSTAGE	1,970.27
	510 : SUPPLIES	1,218.04
	642 : FURN, FIXT. & EQUIP NON-CAPI.	14,053.15
	648 : TECH RELATED FURN, FIXT, & EQUIP-CAPTIAL	4,086.71
	649 : TECH RELATED FURN, FIXT, & EQUIP- NONCAPITALIZED	534.82
	730 : DUES AND FEES	2,903.50
7700 : CENTRAL SERVICES Total		126,488.95
7800 : PUPIL TRANSPORTATION	110 : ADMINSTRATORS - REGULAR PAY	5,801.63
	160 : OTHER SUPPORT PERSONNEL	82,840.29
	165 : NON INST SICK LEAVE BUY BACK	2,265.79
	210 : RETIREMENT	6,739.12
	220 : SOCIAL SECURITY	5,521.89
	221 : MEDICARE	1,291.59
	230 : GROUP INSURANCE	19,729.04
	310 : PROFESSIONAL SERVICES	1,833.27
	350 : REPAIRS AND MAINTENANCE	1,447.42
	360 : RENTALS	626.79
	450 : GASOLINE	7,329.43
	460 : DIESEL FUEL	6,981.74
	510 : SUPPLIES	1,883.73
	550 : REPAIR PARTS	8,176.80
	560 : TIRES AND TUBES	4,240.00
	649 : TECH RELATED FURN, FIXT, & EQUIP- NONCAPITALIZED	196.40
	730 : DUES AND FEES	1,266.61
	750 : SUBSTITUTES	5,325.00
7800 : PUPIL TRANSPORTATION Total		163,496.54
7900 : OPERATION OF PLANT	123 : CLASSROOM TEACHER-SUPPLEMENTS	2,799.00
	153 : TEACHER AIDES - SUPPLEMENTS	3,474.00
	160 : OTHER SUPPORT PERSONNEL	107,014.19
	163 : OTHER SUPPPORT-SUPPLEMENTS	7,294.57
	164 : OTHER SUPPORT-TERMINAL PAY	4.94
	165 : NON INST SICK LEAVE BUY BACK	15,867.89
	168 : RETIREMENT BONUS	1,646.90
	210 : RETIREMENT	9,949.04
	220 : SOCIAL SECURITY	8,200.48
	221 : MEDICARE	1,917.73
	230 : GROUP INSURANCE	22,325.48
	310 : PROFESSIONAL SERVICES	5,043.59
	320 : INSURANCE & BOND PREMIUMS	82,870.00
	350 : REPAIRS AND MAINTENANCE	15.00
	360 : RENTALS	5,657.55
	379 : TELEPHONE & DATA COMMUNICATIONS	3,712.79
	380 : PUBLIC UTILITY SERVICES	25,224.15
	384 : SEWAGE	874.52

DISTRICT SCHOOL BOARD OF HOLMES COUNTY
TOTAL EXPENSES BY FUNCTION AND OBJECT
July 1, 2017 -September 30, 2017

	385 : GARBAGE	3,148.80
	390 : OTHER PURCHASED SERVICE	1,706.00
	420 : BOTTLED GAS	1,556.90
	430 : ELECTRICITY	172,165.57
	510 : SUPPLIES	47,343.79
	641 : FURN. FIXTURES & EQUIP-CAPITAL	4,425.00
	730 : DUES AND FEES	865.39
	750 : SUBSTITUTES	2,965.79
7900 : OPERATION OF PLANT Total		538,069.06
8100 : MAINTENANCE OF PLANT	110 : ADMINSTRATORS - REGULAR PAY	18,513.48
	160 : OTHER SUPPORT PERSONNEL	89,330.74
	164 : OTHER SUPPORT-TERMINAL PAY	718.91
	165 : NON INST SICK LEAVE BUY BACK	22,034.26
	168 : RETIREMENT BONUS	13,440.00
	210 : RETIREMENT	11,223.41
	220 : SOCIAL SECURITY	6,363.37
	221 : MEDICARE	1,488.20
	230 : GROUP INSURANCE	13,568.42
	310 : PROFESSIONAL SERVICES	7,198.16
	350 : REPAIRS AND MAINTENANCE	13,460.26
	360 : RENTALS	457.50
	510 : SUPPLIES	12,944.50
	550 : REPAIR PARTS	87.25
	641 : FURN. FIXTURES & EQUIP-CAPITAL	5,896.76
	642 : FURN, FIXT. & EQUIP NON-CAPI.	472.21
	671 : IMPROVEMENTS O/T BLDGS-CAPITAL	1,950.00
8100 : MAINTENANCE OF PLANT Total		219,147.43
8200 : ADMINISTRATIVE TECHNOLOGY SERV	650 : MOTOR VEHICLES	1,200.00
	730 : DUES AND FEES	85.21
8200 : ADMINISTRATIVE TECHNOLOGY SERV Total		1,285.21
110 : GENERAL OPERATING Total		4,640,012.89

**DISTRICT SCHOOL BOARD OF HOLMES COUNTY
TOTAL EXPENSES BY FUNCTION AND OBJECT
July 1, 2017 -September 30, 2017**

210 DEBT SERVICE

Function	Object	Expended YTD
9200 : DEBT SERVICE	710 : REDEMPTION OF PRINCIPAL	237,562.26
	720 : INTEREST	3,443.57
9200 : DEBT SERVICE Total		241,005.83
210 : SBE/COBI BONDS Total		<u>241,005.83</u>

**DISTRICT SCHOOL BOARD OF HOLMES COUNTY
TOTAL EXPENSES BY FUNCTION AND OBJECT
July 1, 2017 -September 30, 2017**

340 PECO

Function	Object	Expended YTD
7420 : FACILITIES, ACQUISITION & CONS	620 : AUDIO-VISUAL MATERIALS	8,343.28
	621 : CAPITALIZED A V MATERIALS	1,848.00
	622 : NON CAPITALIZED A V MATERIALS	23,067.00
	630 : BUILDING & FIXED EQUIPMENT	180,522.34
	641 : FURN. FIXTURES & EQUIP-CAPITAL	254,480.12
	642 : FURN, FIXT. & EQUIP NON-CAPI.	178,486.37
	643 : COMPUTER HARDWARE & TECH RELATED INFRASTRUCTURE - CAPITAL	2,559.71
	644 : COMPUTER HARDWARE-NON CAPITAL	11,458.97
	671 : IMPROVEMENTS O/T BLDGS-CAPITAL	123,505.40
	730 : DUES AND FEES	31.00
7420 : FACILITIES, ACQUISITION & CONS Total		784,302.19
340 : PECO Total		<u>784,302.19</u>

**DISTRICT SCHOOL BOARD OF HOLMES COUNTY
TOTAL EXPENSES BY FUNCTION AND OBJECT
July 1, 2017 -September 30, 2017**

410 FEDERAL

Function	Object	Expended YTD
5100 : BASIC	120 : CLASSROOM TEACHERS	103,475.50
	150 : AIDES	4,161.60
	160 : OTHER SUPPORT PERSONNEL	4,204.32
	210 : RETIREMENT	8,857.87
	220 : SOCIAL SECURITY	6,801.04
	221 : MEDICARE	1,590.56
	230 : GROUP INSURANCE	12,887.32
	369 : TECH & SOFTWARE RENTALS, LICENSES & SUBSCRIPTIONS	21,997.37
	510 : SUPPLIES	1,459.29
	590 : OTHER MATERIALS & SUPPLIES	320.40
	644 : COMPUTER HARDWARE-NON CAPITAL	4,539.66
	649 : TECH RELATED FURN, FIXT, & EQUIP- NONCAPITALIZED	1,093.77
	750 : SUBSTITUTES	672.63
5100 : BASIC Total		172,061.33
5200 : EXCEPTIONAL EDUC	120 : CLASSROOM TEACHERS	7,210.72
	150 : AIDES	37,808.34
	210 : RETIREMENT	3,428.89
	220 : SOCIAL SECURITY	2,756.74
	221 : MEDICARE	644.72
	230 : GROUP INSURANCE	11,255.32
	310 : PROFESSIONAL SERVICES	828.75
	311 : PROF SVCS: UP TO 25,000	910.00
	510 : SUPPLIES	464.72
	730 : DUES AND FEES	260.00
	750 : SUBSTITUTES	609.83
5200 : EXCEPTIONAL EDUC Total		66,178.03
5300 : VOCATIONAL	330 : TRAVEL	216.00
	369 : TECH & SOFTWARE RENTALS, LICENSES & SUBSCRIPTIONS	5,379.61
	510 : SUPPLIES	2,277.23
	642 : FURN, FIXT. & EQUIP NON-CAPI.	339.97
5300 : VOCATIONAL Total		8,212.81
5900 : OTHER INSTRUCTION	110 : ADMINSTRATORS - REGULAR PAY	3,079.01
	120 : CLASSROOM TEACHERS	47,790.08
	130 : OTHER CERTIFIED INSTRUCTIONAL	11,403.53
	210 : RETIREMENT	4,932.00
	220 : SOCIAL SECURITY	3,804.09
	221 : MEDICARE	889.67
5900 : OTHER INSTRUCTION Total		71,898.38
6120 : GUIDANCE	130 : OTHER CERTIFIED INSTRUCTIONAL	8,359.64
	210 : RETIREMENT	662.08
	220 : SOCIAL SECURITY	500.82
	221 : MEDICARE	117.11
	230 : GROUP INSURANCE	799.52

DISTRICT SCHOOL BOARD OF HOLMES COUNTY
TOTAL EXPENSES BY FUNCTION AND OBJECT
July 1, 2017 -September 30, 2017

6120 : GUIDANCE Total		10,439.17
6140 : PSYCHOLOGICAL	310 : PROFESSIONAL SERVICES	16,301.00
6140 : PSYCHOLOGICAL Total		16,301.00
6150 : PARENT INVOLVEMENT	510 : SUPPLIES	10,210.71
6150 : PARENT INVOLVEMENT Total		10,210.71
6300 : INSTRUCTION & CURR. DEVELOP	110 : ADMINSTRATORS - REGULAR PAY	9,256.74
	130 : OTHER CERTIFIED INSTRUCTIONAL	8,936.20
	150 : AIDES	3,186.00
	210 : RETIREMENT	3,539.50
	220 : SOCIAL SECURITY	1,164.10
	221 : MEDICARE	272.26
	230 : GROUP INSURANCE	2,233.96
	311 : PROF SVCS: UP TO 25,000	3,750.00
	372 : POSTAGE	23.75
6300 : INSTRUCTION & CURR. DEVELOP Total		32,362.51
6400 : INST. STAFF TRAINING	120 : CLASSROOM TEACHERS	3,400.00
	130 : OTHER CERTIFIED INSTRUCTIONAL	8,796.20
	210 : RETIREMENT	987.28
	220 : SOCIAL SECURITY	752.68
	221 : MEDICARE	176.05
	230 : GROUP INSURANCE	843.00
	310 : PROFESSIONAL SERVICES	11,250.00
	311 : PROF SVCS: UP TO 25,000	6,250.00
	330 : TRAVEL	3,152.21
	510 : SUPPLIES	231.88
	730 : DUES AND FEES	8,500.00
	750 : SUBSTITUTES	275.25
6400 : INST. STAFF TRAINING Total		44,614.55
7800 : PUPIL TRANSPORTATION	150 : AIDES	1,395.00
	160 : OTHER SUPPORT PERSONNEL	2,425.00
	210 : RETIREMENT	301.69
	220 : SOCIAL SECURITY	268.04
	221 : MEDICARE	62.69
	460 : DIESEL FUEL	5,506.05
	750 : SUBSTITUTES	504.00
7800 : PUPIL TRANSPORTATION Total		10,462.47
410 : FEDERAL Total		442,740.96

**DISTRICT SCHOOL BOARD OF HOLMES COUNTY
TOTAL EXPENSES BY FUNCTION AND OBJECT
July 1, 2017 -September 30, 2017**

710 FOOD SERVICE

Function	Object	Expended YTD
7600 : FOOD SERVICE	110 : ADMINSTRATORS - REGULAR PAY	5,554.02
	150 : AIDES	1,544.76
	160 : OTHER SUPPORT PERSONNEL	88,242.37
	163 : OTHER SUPPPORT-SUPPLEMENTS	1,249.05
	165 : NON INST SICK LEAVE BUY BACK	2,052.53
	210 : RETIREMENT	8,920.57
	220 : SOCIAL SECURITY	6,308.91
	221 : MEDICARE	1,475.34
	230 : GROUP INSURANCE	23,116.09
	310 : PROFESSIONAL SERVICES	4,550.00
	350 : REPAIRS AND MAINTENANCE	269.27
	369 : TECH & SOFTWARE RENTALS, LICENSES & SUBSCRIPTIONS	8,030.00
	390 : OTHER PURCHASED SERVICE	468.00
	510 : SUPPLIES	12,985.90
	570 : FOOD	57,303.51
	580 : COMMODITIES	3.51
	648 : TECH RELATED FURN, FIXT, & EQUIP-CAPTIAL	2,738.00
	649 : TECH RELATED FURN, FIXT, & EQUIP- NONCAPITALIZED	858.00
	730 : DUES AND FEES	5,944.26
	750 : SUBSTITUTES	3,017.25
7600 : FOOD SERVICE Total		234,631.34
710 : FOOD SERVICE Total		234,631.34

DISTRICT SCHOOL BOARD OF HOLMES COUNTY
TOTAL EXPENSES BY FUNCTION AND OBJECT
July 1, 2017 -September 30, 2017

810 INTERNAL SERVICE

7500 : FISCAL SERVICES	730 : DUES AND FEES	50.00
7500 : FISCAL SERVICES Total		50.00
810 : INTERNAL SERVICE FUND Total		<u><u>50.00</u></u>
Grand Total		<u><u>6,342,743.21</u></u>

JULY-SEPTEMBER PURCHASE ORDERS OVER \$3,000

PO #	PO Date	Vendor	Requested
3356	7/10/2017	AGILE MIND EDUCATIONAL HOLDING INC	15,360.00
3359	7/10/2017	FLORIDA SCHOOL BOOK	9,733.95
3360	7/10/2017	FLORIDA SCHOOL BOOK	6,859.10
3361	7/10/2017	FLORIDA SCHOOL BOOK	12,862.85
3363	7/10/2017	EDGENUITY	17,300.00
3364	7/10/2017	FLORIDA SCHOOL BOOK	21,115.80
3365	7/10/2017	FLORIDA SCHOOL BOOK	12,985.28
3370	7/11/2017	FLORIDA SCHOOL BOOK	91,050.95
3371	7/12/2017	JACK MARELL	10,800.00
3373	7/13/2017	COVINGTON HEAVY DUTY	8,500.00
3374	7/17/2017	CHIPOLA COLLEGE	40,000.00
3376	7/17/2017	BARNES AND NOBLE	25,000.00
3377	7/17/2017	NORTHWEST FLORIDA STATE COLLEGE	35,000.00
3378	7/17/2017	BARNES AND NOBLE	20,000.00
3379	7/17/2017	GULF COAST STATE COLLEGE	20,000.00
3380	7/17/2017	GULF COAST STATE COLLEGE	10,000.00
3381	7/17/2017	DONNA SZPYRKA	6,250.00
3384	7/17/2017	FL SCHOOL BOARD ASSO	9,749.00
3387	7/17/2017	CONTRACT PAPER	26,916.00
3391	7/18/2017	JJS SUPPLY	14,165.41
3392	7/18/2017	CALICO INDUSTRIES	5,952.96
3394	7/18/2017	DADE PAPER CO	17,258.33
3396	7/19/2017	FL SCHOOL BOARD ASSO	4,200.00
3411	7/24/2017	FLORIDA SCHOOL BOOK	9,657.90
3413	7/24/2017	NATIONAL RESTAURANT	4,244.35
3415	7/24/2017	NATIONAL RESTAURANT	4,244.25
3416	7/24/2017	ROAD MART	4,240.00
3423	7/26/2017	CULPEPPER CONSTRUCTI	1,274,344.42
3424	7/25/2017	MIDSOUTH PAVING INC. D/B/A MIDSOUTH AGGREGATES	112,997.94
3429	7/26/2017	ARTHUR J. GALLAGHER RISK MANAGEMENT SERVICES, INC.	82,870.00
3431	7/26/2017	POWER BUYING GROUP	4,500.00
3437	7/27/2017	WEST FLORIDA ELECTRI	333,200.00
3438	7/31/2017	HARRIS SCHOOL SOLUTI	6,277.50
3441	7/31/2017	KYNETIC TECHNOLOGIES, LLC	24,915.00
3443	8/2/2017	FIELD DATA/EASITRAC	8,170.00
3447	8/2/2017	GULF POWER	165,120.00
3449	8/2/2017	TOWN OF PONCE DE LEO	55,200.00
3455	8/3/2017	FLORIDA ASSOC OF DIST SCH SUPERINTENDENTS	6,579.00
3457	8/2/2017	SSE EQUIPMENT	11,612.60
3464	8/7/2017	GULF POWER COMPANY	7,793.17
3465	8/7/2017	DADE PAPER CO	6,609.60
3472	8/7/2017	CANOPY BEHAVIOR SOLUTIONS, LLC	10,000.00
3476	8/7/2017	GULF POWER	408,010.00
3481	8/8/2017	AQUATRON	4,320.00

3482	8/8/2017	CULPEPPER CONSTRUCTI	495,578.65
3490	8/8/2017	REGIONS BANK	3,705.84
3492	8/9/2017	CROSS COUNTRY EXTERM	15,210.00
3495	8/10/2017	MATHES ELECTRIC SUPPLY	3,478.00
3498	8/10/2017	FLORIDA SCHOOL BOOK	17,714.50
3500	8/10/2017	REGIONS BANK	3,399.20
3502	8/10/2017	VERTEKS CONSULTING, INC.	14,053.15
3504	8/11/2017	FLORIDA SCHOOL BOOK	7,416.75
3509	8/11/2017	CITY OF BONIFAY	95,904.00
3510	8/17/2017	DADE PAPER CO	3,560.40
3514	8/18/2017	NATIONAL RESTAURANT	4,244.35
3518	8/22/2017	DONNA SZPYRKA	5,000.00
3522	8/23/2017	CURRICULUM ASSOCIATE	91,100.00
3525	8/24/2017	TRISTATE GRAPHICS	9,360.72
3532	8/28/2017	CERTIPORT	5,750.00
3533	8/28/2017	FLORIDA SCHOOL BOOK	4,117.25
3540	8/29/2017	US FOODS	3,540.79
3542	8/29/2017	US FOODS	3,276.45
3543	8/29/2017	US FOODS	3,609.91
3545	8/29/2017	US FOODS	3,530.35
3547	8/29/2017	US FOODS	3,956.36
3548	8/29/2017	US FOODS	3,083.06
3550	8/29/2017	US FOODS	4,636.46
3553	8/29/2017	US FOODS	7,077.46
3554	8/29/2017	US FOODS	3,800.98
3562	8/30/2017	HOWARD COMPUTERS TEC	10,128.00
3569	8/30/2017	RENAISSANCE LEARNING	21,790.17
3578	8/28/2017	SUSAN M. HUDSON	65,000.00
3580	8/31/2017	MAINSTAGE THEATRICAL	6,544.00
3587	9/5/2017	PAEC	3,750.00
3588	9/5/2017	BLACKBOARD, INC.	13,963.50
3601	9/5/2017	FLORIDA PANHANDLE TECHNICAL COLLEGE	3,000.00
3602	8/31/2017	US FOODS	666,640.00
3605	9/5/2017	CDW GOVERNMENT	4,443.06
3612	9/6/2017	GULF POWER COMPANY	404,711.00
3613	9/6/2017	EMBRY RIDDLE	5,770.80
3620	9/6/2017	EXODUS	29,000.00
3639	9/6/2017	FOLLETT LIBRARY RESO	8,645.00
3643	9/8/2017	DAVIS & SONS PLUMBING	4,550.00
3647	9/13/2017	BORDEN DISTRIBUTOR	12,295.18
3660	9/14/2017	WITTICHEN SUPPLY COM	6,332.75
3666	9/14/2017	CERTIFICATION PARTNERS, LLC	3,400.00
3668	9/15/2017	WASTE MANAGEMENT	3,148.80
3672	9/15/2017	N2Y	3,515.96
3678	9/15/2017	CANON SOLUTIONS AMERICA	3,839.99
3682	9/20/2017	HOLMES CO TIMES/ADV	3,268.00
3689	9/21/2017	MODERN TECH SQUAD	9,694.00

3690	9/21/2017	MATTHEWS BUS ALLIANCE, INC.	5,828.45
3692	9/21/2017	WILLIAMS SCOTSMAN	5,657.55
3693	9/21/2017	DONNA SZPYRKA	6,250.00
3694	9/21/2017	ETHICA	8,500.00
3695	9/21/2017	KEITH LEMASTERS	5,500.00
3701	9/24/2017	GLOBE CHEMICAL	4,425.00
3702	9/24/2017	HOLMES COUNTY SHERIF	10,553.60
3710	9/24/2017	CANNON FINANCIAL	4,338.98
3711	9/24/2017	CANNON FINANCIAL	4,317.61
3712	9/24/2017	CANNON FINANCIAL	5,408.80
3713	9/23/2017	CITY OF BONIFAY	4,500.00
3717	9/25/2017	CRUCIAL LINK COMMUNICATIONS	8,991.50
3719	9/25/2017	CULPEPPER CONSTRUCTI	961,596.63
3720	9/25/2017	HOME OIL COMPANY	19,817.22
Grand Total			6,151,185.54